

Non-loadbearing Fire Resistance Tests



Steel Doorset



Glazed Assembly



Timber Doorset



Wall Partition System

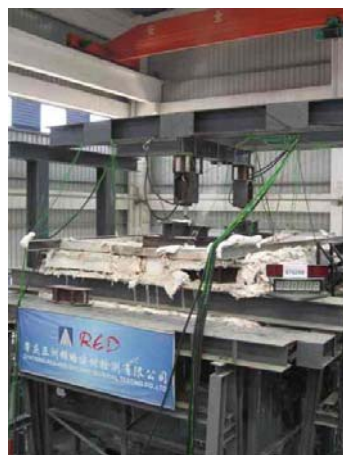


Shutter Assembly

Loadbearing Fire Resistance Tests



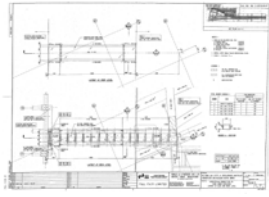
Structural Fire Test
(Horizontal Furnace)



Structural Fire Test
(Vertical Furnace)

Referred Structural Fire Consultancy Services

	<p>Specialist and Fire Consultant for the project of Shanghai Lujiazui Financial Trading Area/Manage Department of Metro project X2. (Shanghai IFC)</p> <p>Client: Sun Hung Kai Properties (Shanghai) Co., Ltd</p>
	<p>“Fire Resistant Design and Assessment of Glued Laminated Beam” for the project of Addition and Alteration to Main Building for Former Marine Police Headquarters, K.I.L. 11161, Tsimshatsui, Kowloon.</p> <p>Client: Everwell International Limited</p>
	<p>“Consultancy service on product development and assessment on fire protection materials such as intumescent paint, spray materials, board etc.”</p> <p>Product: STAHL’s THERMALSHIELD-C Client: STAHL (HK) Fireproofing Materials Limited Period: Jan 2007 ~ Sep 2007 Product: Spray applied cementitious fireproofing material Output: Fire test reports and product fire performance tables.</p> <p>Product: A/D Type 5MD Client: On Year Development Limited Period: Jan 2007 ~ Apr 2007 Product: Spray applied cementitious fireproofing material Output: Fire test reports and product fire performance tables.</p> <p>Product: Tanda AP 25 Client: Warwick Building Material Limited Period: Nov 2007 ~ Apr 2008 Product: Spray applied cementitious fireproofing material Output: Fire test reports and product fire performance tables.</p>



“Assessment on Nullifire S606 and Structural fire test for Nullifire S605 intumescent paint”
for the project of KCRC Ho Tang Lau (Site A) Development.

Client: Pro-Fire Limited



Structural Fire Tests on composite slab with profiled steel sheetings

Project based fire test:

Project: MGM Hotel, Macau

Client: DURO Steel Building Products Limited

Test: Q6J01 – A 150 mm thick composite slab with 0.75 mm thick BONDEK II profiled steel sheeting

Period: Oct 2006 ~ Dec 2006

